

2018 Annual Highlights

Mission and Vision Statements

To end violence, inspire hope and provide unwavering support to all people affected by domestic and sexual violence by engaging our community in safety, equality and partnership.



Embrace envisions a courageous social change taking place ending all forms of oppression and violence and creating healthy communities where every person has the support to thrive.

WE SERVED:



789 men, women, teens and kids with in-person domestic and sexual violence counseling and advocacy services - a 27% increase in in-person services when compared to 2017's services.

22 survivors at high-risk of homicide received 1,836 nights of safe shelter services, counseling, advocacy, and case management support. 41% were children including 2 runaways, and 25% of shelter residents were Native or African American.



545 sexual assault survivors served

305 were adult sexual assault survivors and 240 were child survivors; 44 adults reported sexual abuse as kids



8,024 Advocacy Services Provided

Each survivor coming in-person to Embrace receives an average of 10.2 different advocacy services



Awareness Partnerships

5,850 "Brew Love Not Hate" coffee sleeves distributed to coffee shops and used throughout Domestic Violence Awareness Month as part of the newly established partnerships with local businesses



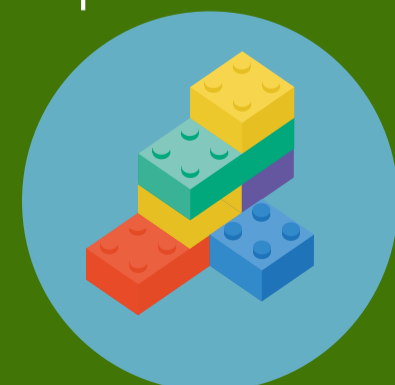
Enhanced Accompaniment Advocacy

117 survivors received accompaniment services to law enforcement and prosecution interviews



466 Crisis Calls

11 Lethality Assessment Program calls with survivors at high-risk of homicide



Play Therapy Tools Created

Seven sand therapy trays were created and distributed to trained staff who used the trays in assisting youth in finding alternative, healthy ways to express and heal from their trauma.

SERVICE NUMBERS



Meeting Survivors Where They Are At

22 adult survivors participated in the evidence-based Seeking Safety group curriculum offered in local jails that addresses PTSD and co-occurring addiction



Connecting with Teens

113 teens received services for teen dating violence in student groups and/or on-site counseling sessions at the schools



Alternative Healing Support Groups

387 survivors received support group services; an 162% increase in support group attendees compared to 2017



Medical Response

32 response backpacks created to give to survivors after evidence collection is completed as part of a medical exam with a forensic nurse



Prevention Education

765 student and community education presentations offered to all three counties reaching 10,000+ people



Innovative Partnerships

Five teens who experienced sexual assault accessed Embrace and Rusk County Public Health's 24/7 emergency contraception and advocacy at the Embrace Office

OUTREACH, PREVENTION & AWARENESS



If you've been sexually assaulted...
You're not alone! Support is available.



Starting January 1, 2019, Embrace advocates are available to provide crisis intervention, advocacy-based counseling, and support services to anyone in Barron County affected by domestic and sexual violence. Embrace's 24/7 services are kind, confidential, non-judgmental, and provided at no cost to you.

Connect with us!
Barron County Outreach Office: 715.537.6334
24/7 Crisis Line: 800-924-0556
24/7 Text Line: 715-532-6976

Office Location
Health and Human Services
335 F. Monroe St.
Barron, WI 54003

BARK AGAINST ABUSE

2nd Annual!
An Awareness Walk
A fun way to meet fellow animal lovers and raise awareness of the connection between animal abuse and family violence. 76% of animal abusers also abuse a member of their family. By joining this walk, you are helping to end domestic violence in our community.

Thursday, October 4, 2018
5:00 pm - 6:00 pm
Walk starts at 5:15 pm

Learn how to report animal abuse and prevent family violence

Free, professional photo with your pet!

There's no entry fee to join the walk. Bring your own cat litter, bleach, Dawn dish soap, and a water bottle.

Join us for a free screening of "The Hunting Ground", a moving documentary that sheds light on the reality of sexual assault on college campuses and the empowered student taking on these institutions.

Movie followed by a focused conversation on how to keep each other safe and resources and support in our community.

The Hunting Ground

Movie Screening and Discussion
Thursday, May 17th @ 5:30 pm
Birchwood School District

For more information:
Jessica McCurdy
Community Education Director
715.354.3471

FOOD for MORE CHALLENGE
July 1 - August 11, 2018



Consent is an active, sober, verbal yes. Not the absence of a no.

embrace
(800) 924-0556
Text (715) 532-6976

MY CUP IS NOT MY CONSENT

USING ALCOHOL TO GET SEX IS SEXUAL ASSAULT
#consentiseverything
#sexualassaultawarenessmonth

The Consent Coaster Campaign
Educating and Preventing Sexual Violence

*You are imperfect
You are wired for struggle
But you are worthy of love and belonging.*

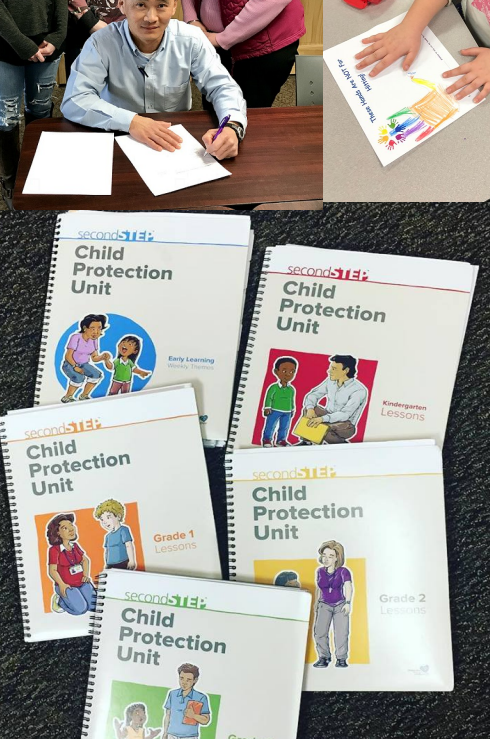
embrace
{ people. change. equality. }

Connect with us
Call or Text: (715) 532-6976
24/7 Help Line: (800) 924-0556
Online: www.embracewi.org

SAFE SPACE
I am an Ally

Embrace welcomes and respects all people regardless of sexual orientation, gender identity, age, race, religion or ethnicity.

embrace
{ people. change. equality. }



#metoo and need to talk about your experience?

Advocates from Embrace are here to listen.

800.924.0556 | 715.532.6976

Emergency Contraception is Available here!

IN CASE OF UNPROTECTED SEX BREAK GLASS

Want to learn more? See back information

A partnership between **embrace** and Public Health

Completely confidential and at no cost to you!

You Can Make A Difference Volunteer

Embrace Services is seeking volunteers in Price County, Rusk County and Washburn County Offices

embrace
{ people. change. equality. }

800-924-0556

EVERY BATHROOM STALL CAMPAIGN

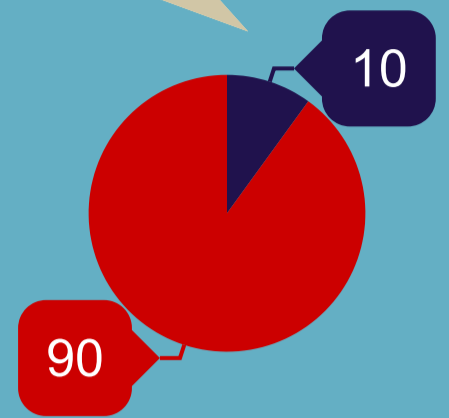
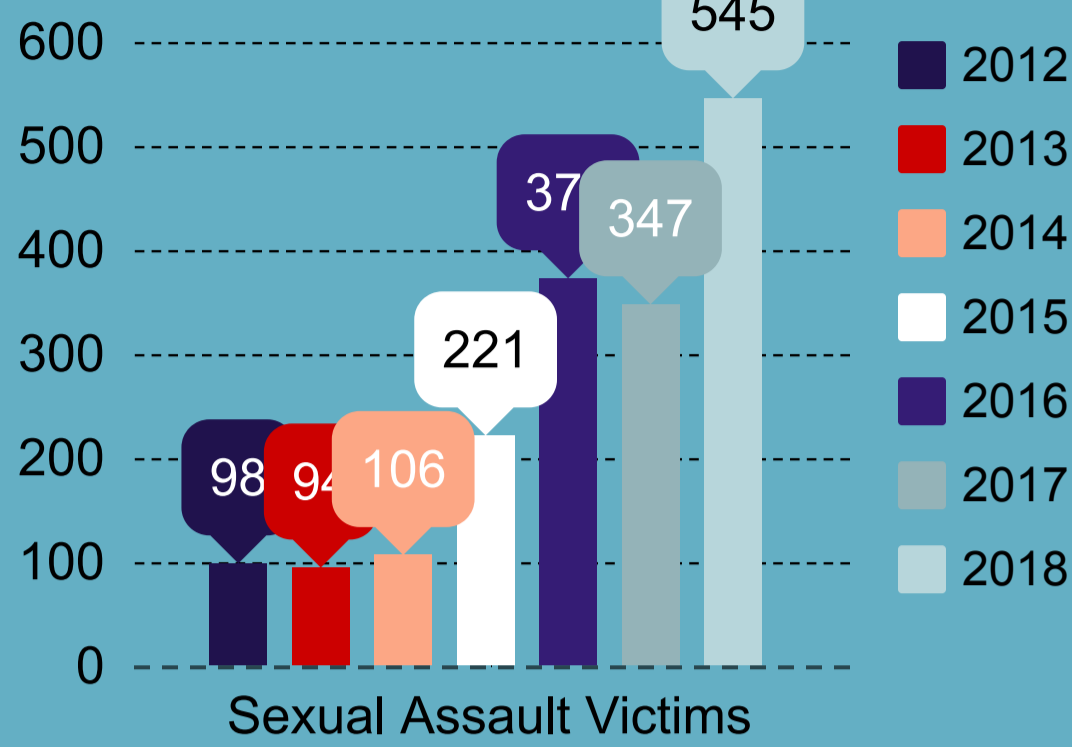
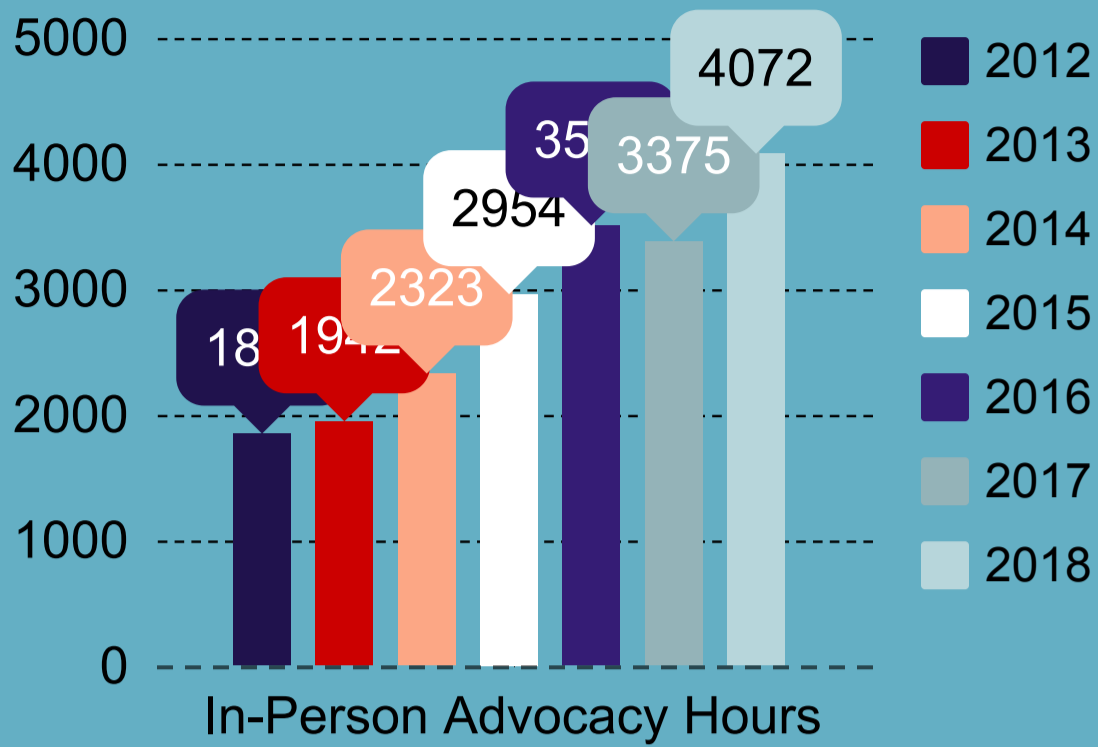
THANK YOU TO OUR LOCAL BUSINESS PARTNERS FOR THEIR COURAGE TO TAKE A STAND AGAINST DOMESTIC AND SEXUAL VIOLENCE AND CONNECT ALL OF OUR NEIGHBORS TO SUPPORT. VIOLENCE HAPPENS BEHIND CLOSED DOORS. SO DOES HELP.

We had such a welcoming reception to the Campaign, we ran out of ALL of our posters! But, we will be printing more! The posters are a discreet way to connect survivors to resources and safety. Do your part to end domestic and sexual violence.

embrace
{ people. change. equality. }

PROGRAM GROWTH

"... you are doing such a great job reaching students! [Embrace's Narrative Report] was so complete and thorough and really gave me a good idea of all the good work that Embrace is doing. I was especially impressed with the Connected Kids Program and the Seeking Safety Support Groups. In fact, I used the part about Seeking Safety in my report to my federal funder as an example of the good work going on in Wisconsin on trauma-sensitive services. A shout out from me to you and your staff!" --Sharon Lewandowski, WI Dept. of Children and Families



Services & Outreach to Underserved Populations

Almost 10% of people who received in-person services in 2018 were Latinx, African American, Asian or Native American



3 new Foundation, State, and Federal grant awards secured to fund enhanced programming:

- Victims of Crime Act (one time project funding)
- Xcel Foundation
- Department of Children and Families, Barron County



Staff received cost of living wage increases to more closely mirror the 2018 Wisconsin Fair Minimum levels for State employees

- An Employee Assistance Program was put in place allowing all Embrace staff access to confidential in-person therapy and phone intervention services for any work place incidents. A Cafeteria Benefit Plan was also implemented allowing full and part time staff access to insurance options including life, accident, disability, and critical illness.

CAPACITY BUILDING ACTION PLAN

In fall 2016, the Embrace Board of Directors underwent a planning process that identified areas needing strengthening and established targets for improvement. Activities and a timeline to achieve the desired outcomes were formulated into an ongoing Action Plan. The Board completed the following activities to build the organization's capacity:

- Researched and developed a monitoring report and process to measure the Board and Executive Director's adherence to Embrace's Board Governance Policies following the Carver Policy Governance Model.
- Enhanced the Board Director orientation and training process including hosting an annual Board Retreat and Training on Embrace's programming and service philosophy.

EXPANDING COLLABORATIVE PROGRAMMING & SYSTEMS ADVOCACY

Early in 2018, Barron County Health and Human Services invited Embrace to consider including Barron County in its service area. "More outreach, prevention, and awareness programs were identified as a need in Barron County, and Embrace's advanced services will meet this important need," said Katie Bement Executive Director at Embrace. "Embrace's wrap-around services and program growth over the past several years have been very positive for survivors and the communities of our current tri-county area." With this invitation to collaborate with Barron County Health and Human Services, Embrace applied for the Wisconsin Department of Children and Families Domestic Violence Outreach Services funding to support Barron County. Embrace was awarded the grant contract in late 2018 officially expanding Embrace's services to Barron County.

"Embrace has the capacity to bring innovative and unique approaches to services that will meet the needs of domestic and sexual violence survivors in Barron County," explained David Willingham President of Embrace's Board of Directors. "By relying on Embrace's current set-up, the expansion of services will be possible without a major increase in administration costs."

The Barron County service expansion will enable Embrace to hire more staff members in 2019 and 2020. A new office will be set up in the County in 2019 that will allow easy-to-access and high quality services. "Embrace hopes to share an office space with the sexual assault services providers in the County, St. Croix Sexual Assault Response Team and Community Referral Agency (CRA), to create a single hub for services," said Brittny Olson Domestic Violence Program Coordinator at Embrace.

"Embrace Board and Staff are looking forward to working together with Health and Human Services staff, Law Enforcement, and all community agencies serving survivors to add to the County's system response and reduce the risk of violence and homicides throughout the communities," highlighted Cassandra Clark Sexual Violence Program Coordinator at Embrace. "Embrace has already begun partnering with local businesses to raise awareness and end the silence around domestic violence."

"The Embrace Board of Directors is proud of the high quality and effective services provided by our staff and share the excitement of the staff as they embark on this new chapter in the Embrace Services story. Most important of all is to know domestic and sexual assault survivors will have healing services and support available to them to regain hope and build a trauma-free life," continued Willingham.

"... all of the staff are absolutely top notch! I learned more in 2 years than 30 years of therapy! I am an absolute different person with every large tool box. Although I moved, I will absolutely miss [my advocate] as she was part of my life. The changes in my life now are shocking even me! Thank you many times!" - Survivor

Board of Directors

Dave Willingham - President, Kelly Swan - Vice President, Kathy Mai - Treasurer, Susie Daniels - Secretary, Thomas Frost - Personnel Chair, Kevin Julien, John Kmosena, Annette Barna, Sherrie Wiegand, Karla Potts-Shufelt, Stacey Frolik, Bob Carter, Chris Fitzgerald



Staff

Katie Bement, Angela Frieze, Brittny Olson, Cassandra Clark, Kendra Taber, Robyn Wiemer, Heidi Woldhuis, Jessica Christianson, Brandy Carlsen, Chris Mortenson, Keith Rudi, Nicholas Wisniewski, Geri Guertin, Georgette Bembenek, Debbie Meye, Melissa Baisden, Mindy McConnell, Judy Bubolz, Amanda Camren, Kristie Walker

34 volunteers and interns donated over **400** hours to the organization.